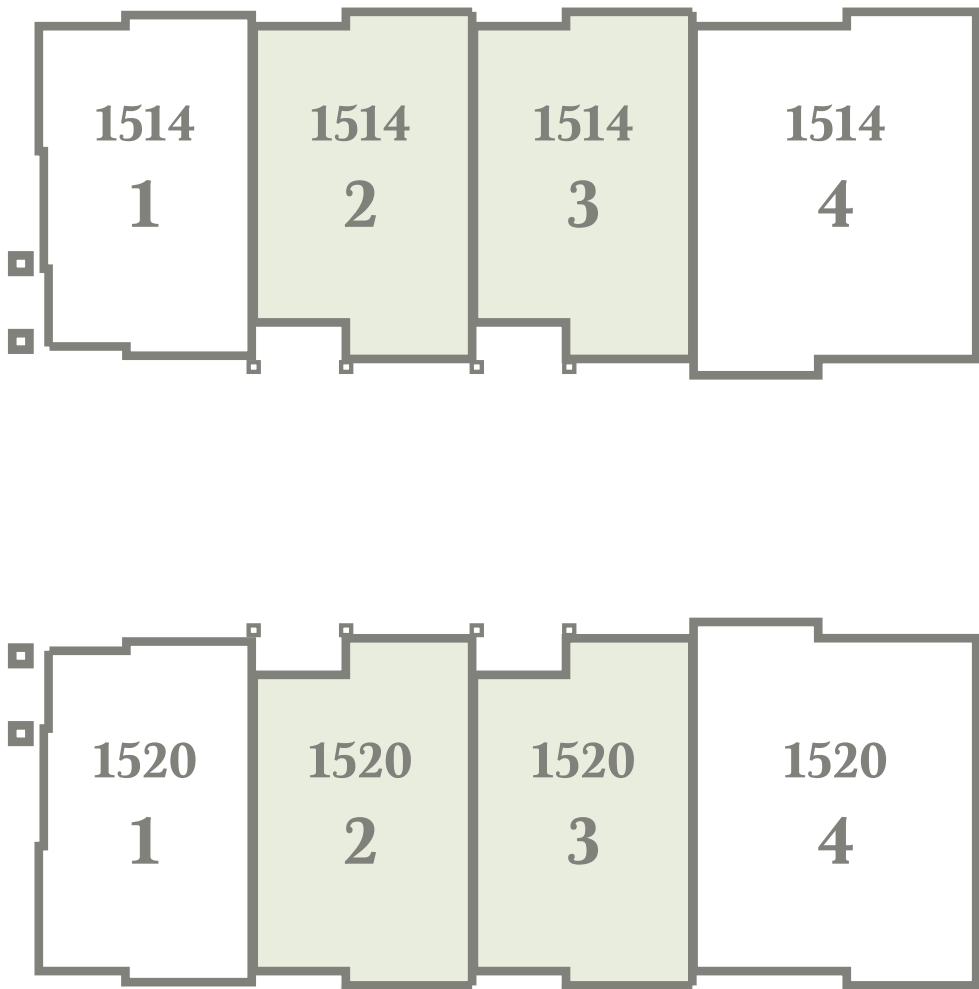
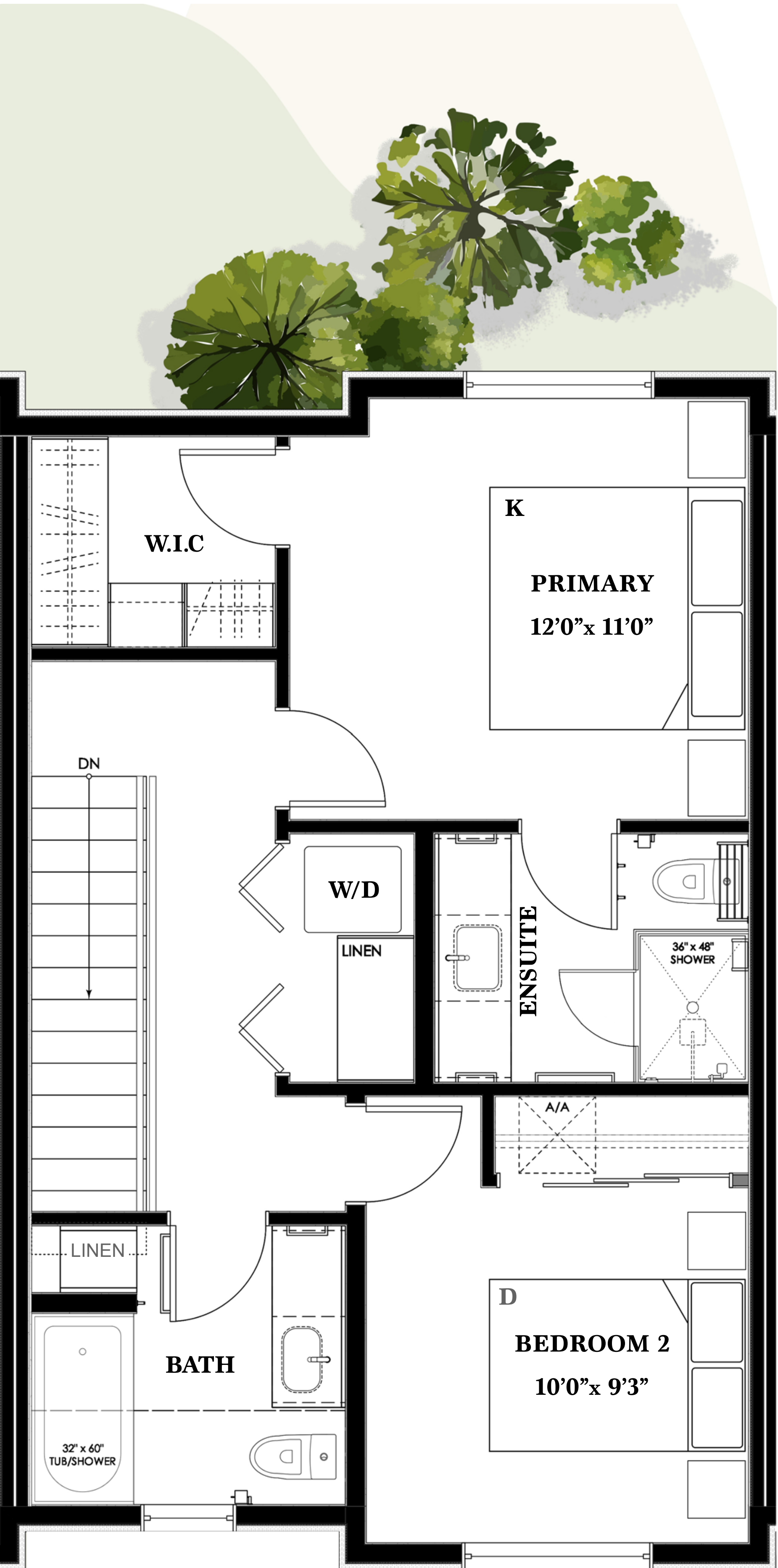
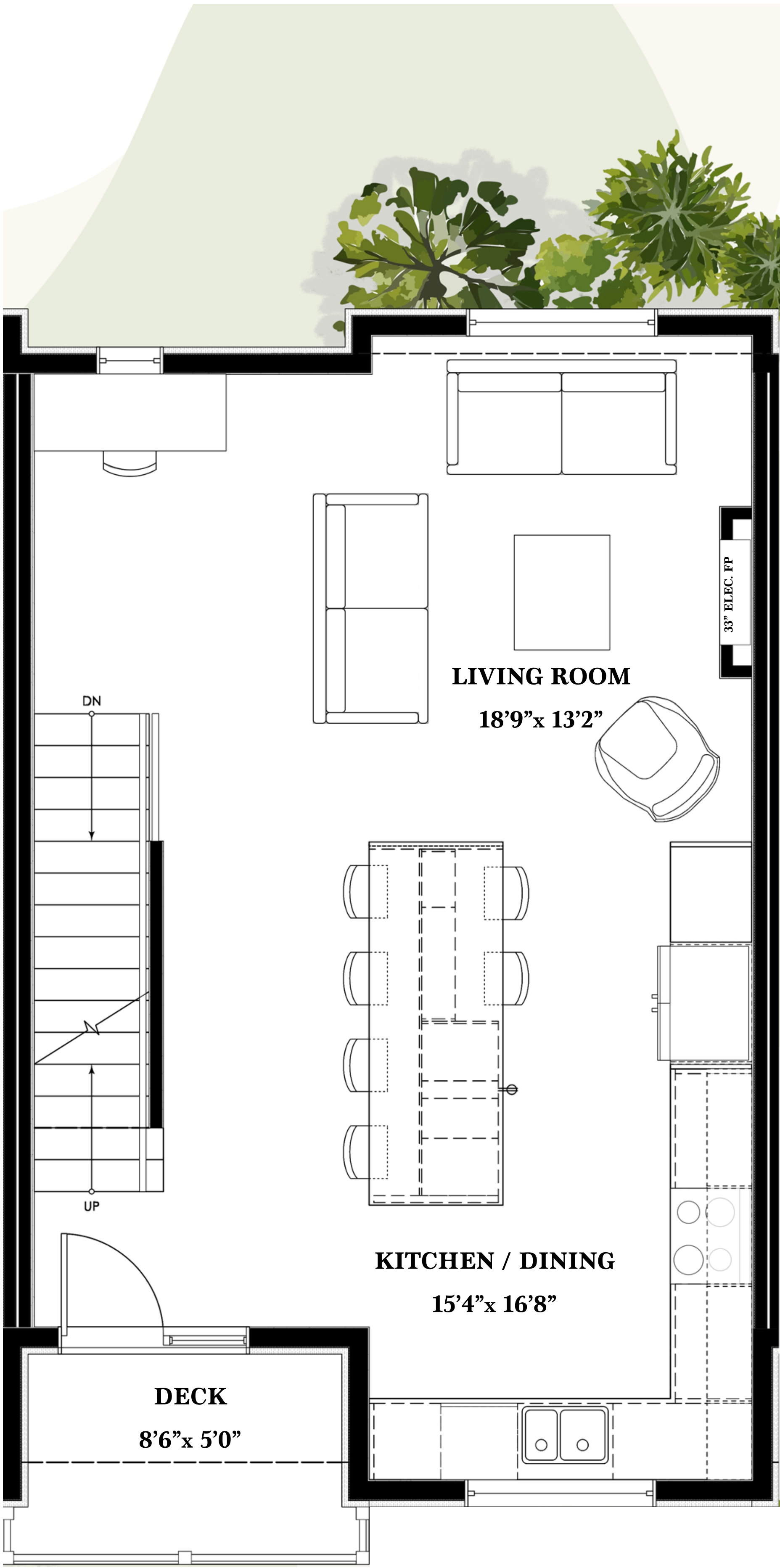
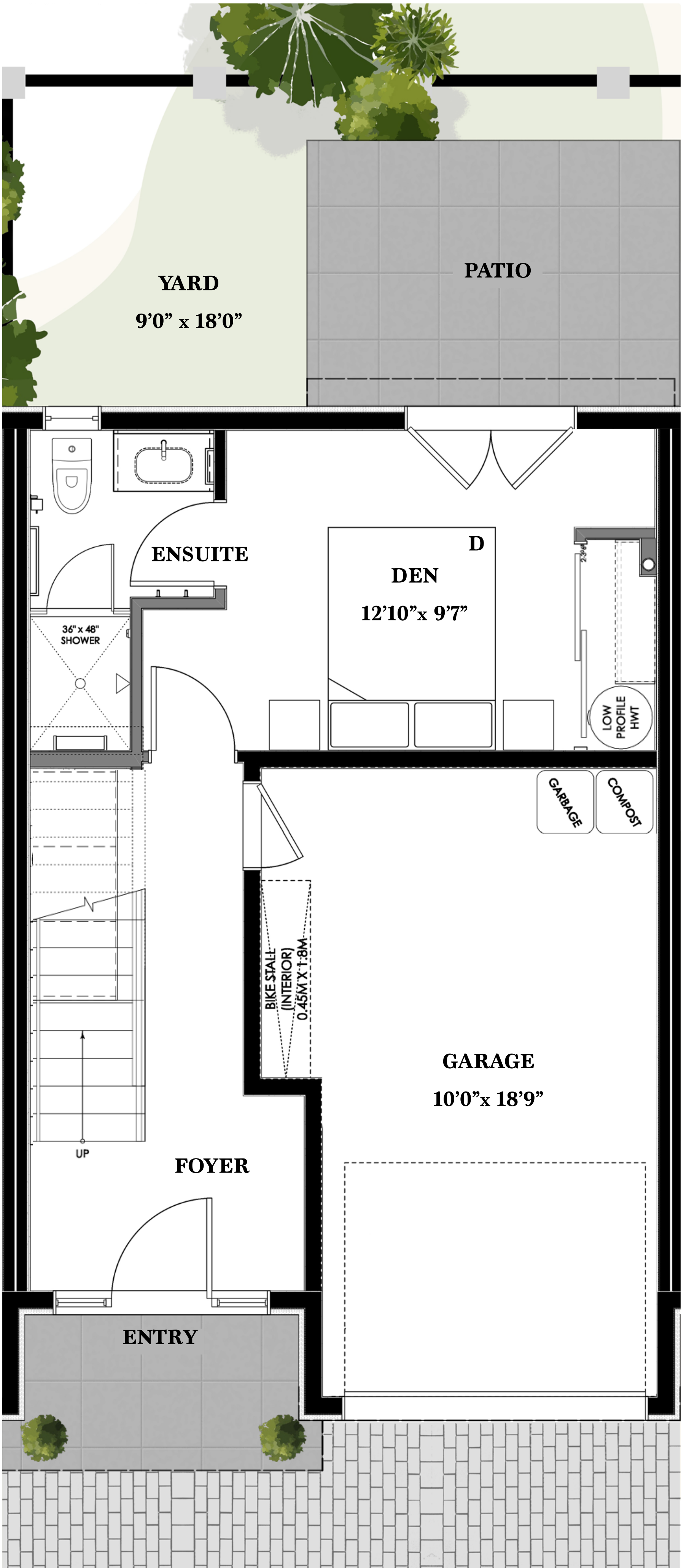


3 BEDROOM + 3 BATHROOM

Foul Bay Road



3 Bed + 3 Bath	Unit 2	Unit 3
Lower:	325 sqft	325 sqft
Main:	554 sqft	554 sqft
Upper:	580 sqft	576 sqft
Livable Space:	1,459 sqft	1,455 sqft
Garage:	225 sqft	225 sqft
Yard/Patio:	199 sqft	199 sqft
Deck	59 sqft	59 sqft



Note: The measurements provided were determined by a qualified surveyor based on construction plans. Final measurements will be confirmed once the homes are built. Upon completion, the land and garden allocations, deck sizes, and final dimensions for each unit will be assigned.

