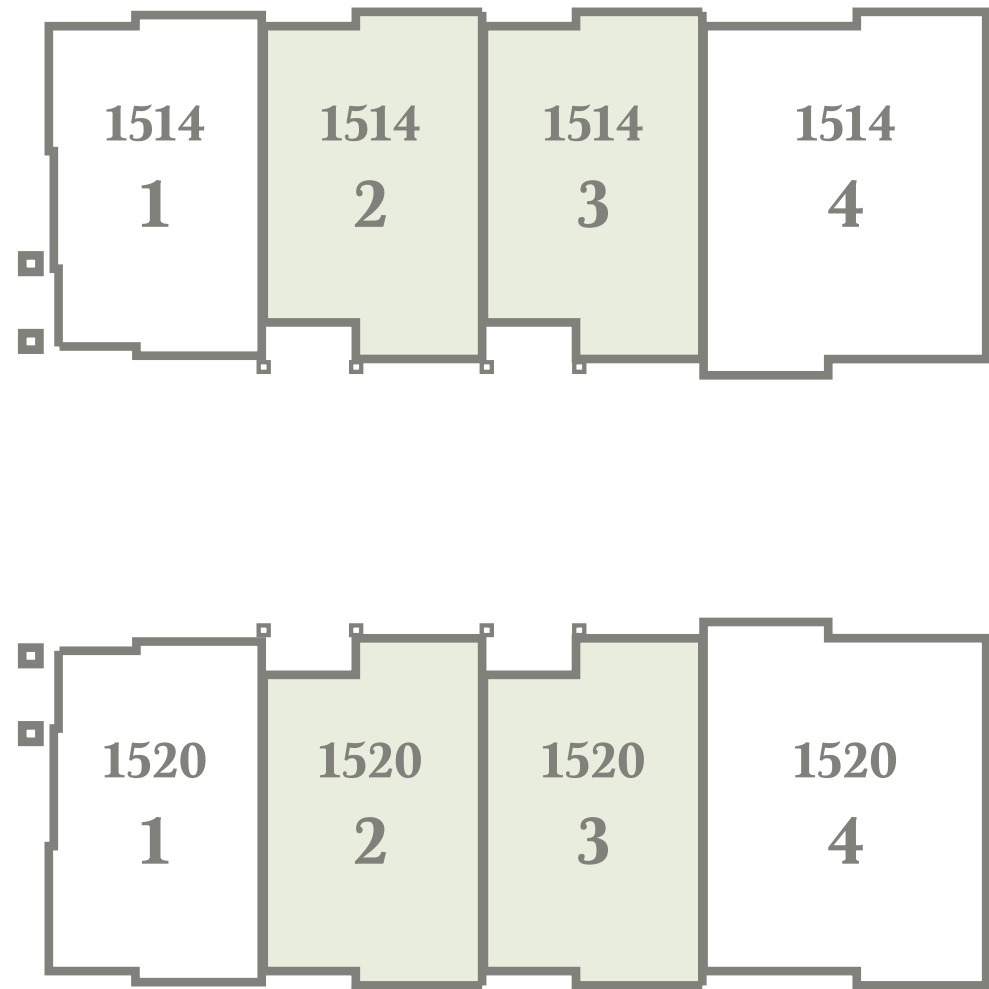
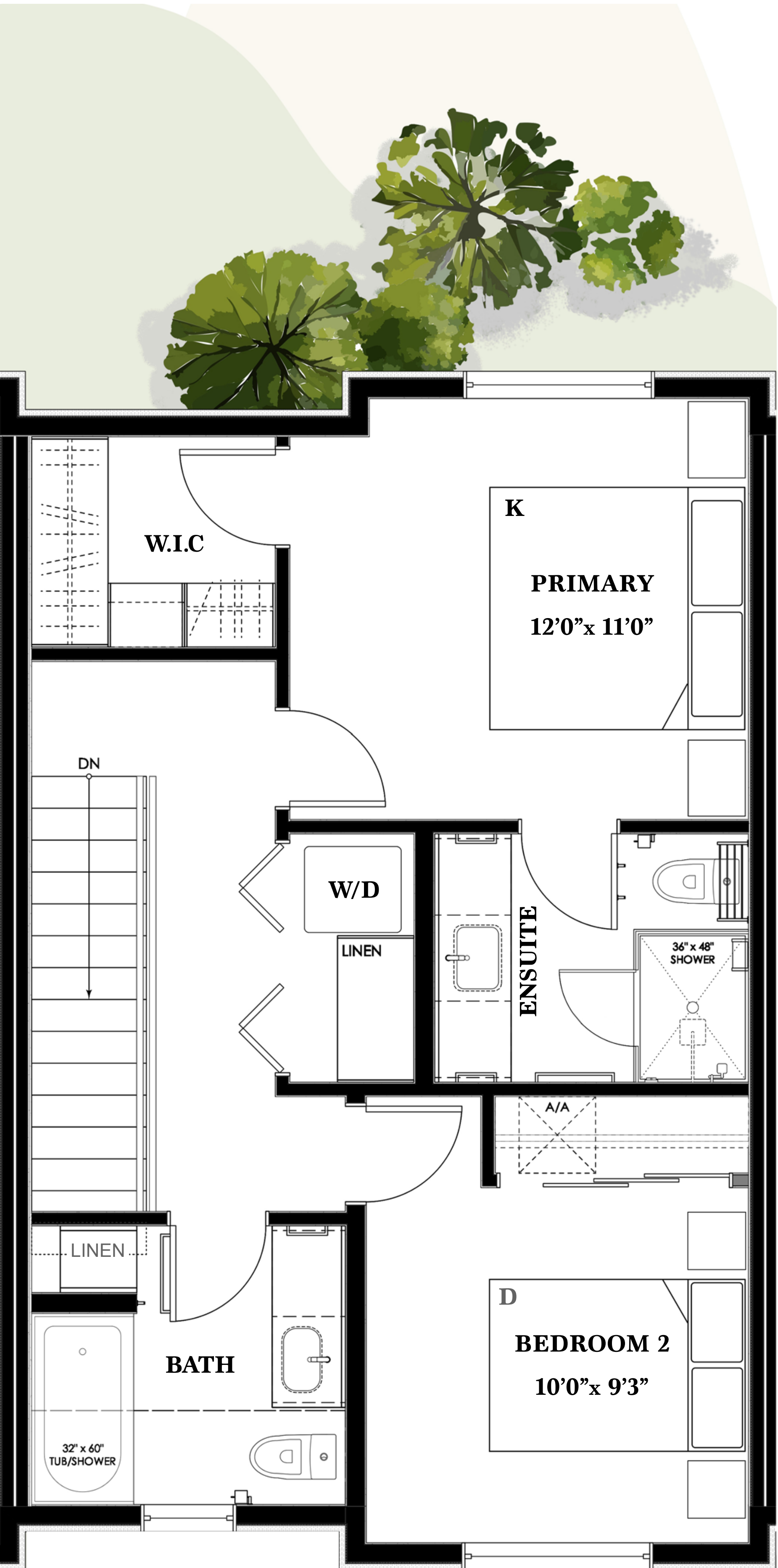
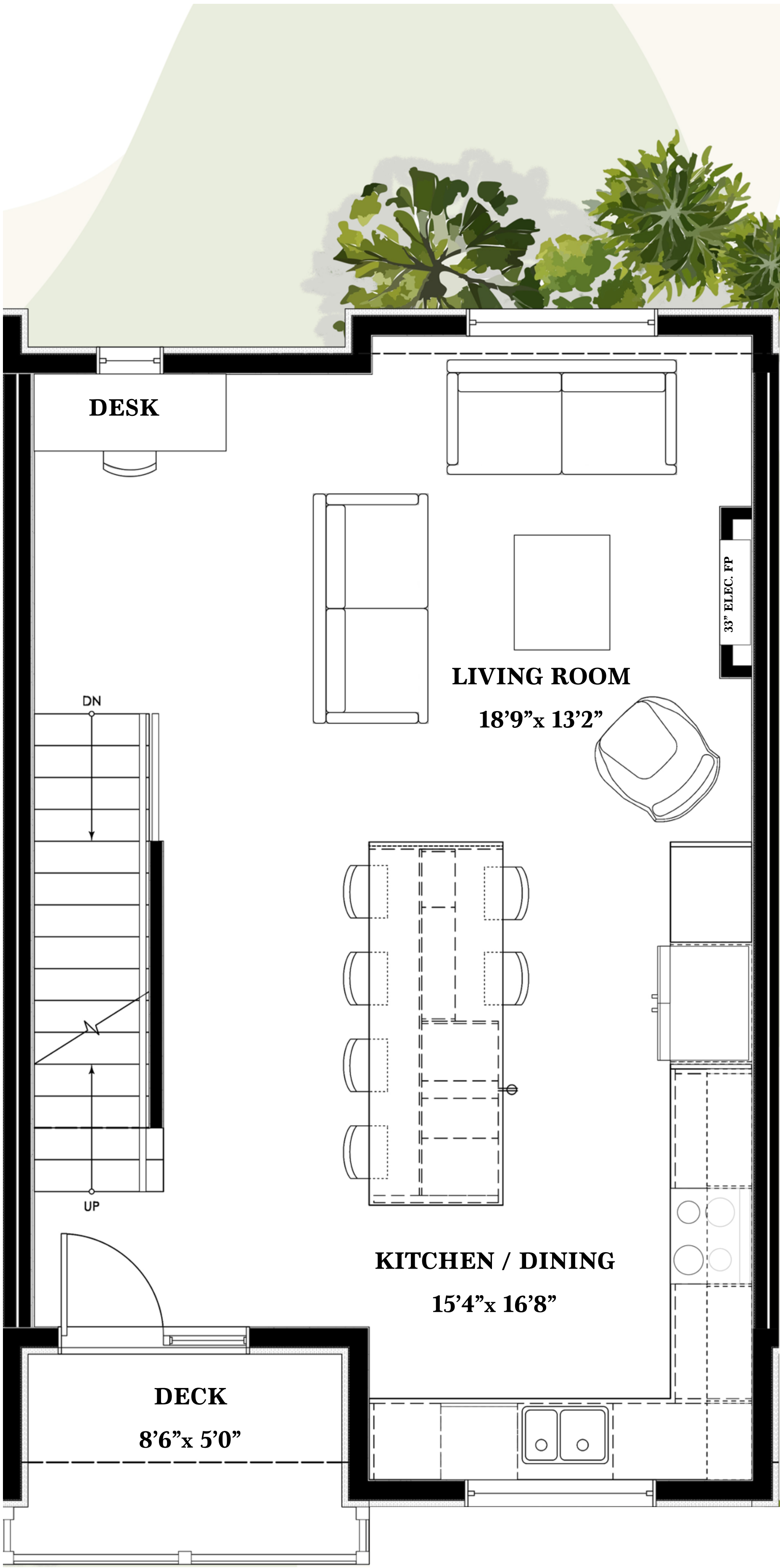
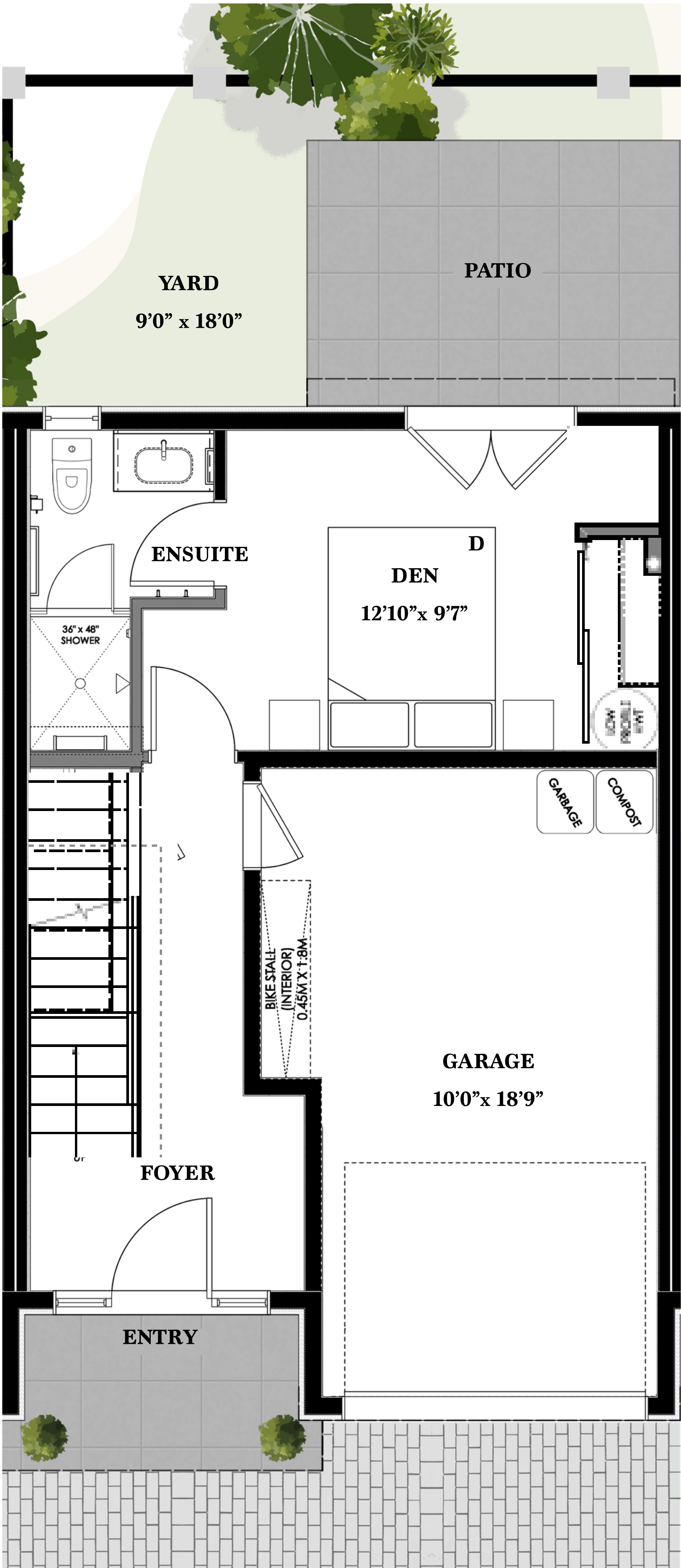


3 BEDROOM + 3 BATHROOM

Foul Bay Road



3 Bed + 3 Bath	
Lower:	325 sqft
Main:	554 sqft
Upper:	580 sqft
Total Livable Space:	1,459 sqft
Garage:	225 sqft
Plus deck, private patio and yard	



Note: The measurements provided were determined by a qualified surveyor based on construction plans. Final measurements will be confirmed once the homes are built. Upon completion, the land and garden allocations, deck sizes, and final dimensions for each unit will be assigned.

